

*Where Comfort is Essential*



800 lb Weight  
Capacity  
(363 kg)

Seat width: 27" (68 cm) 33" (83 cm) with arm width adjustment  
Adjustable seat depth: 21" or 23" (53 cm or 58 cm)  
Adjustable seat height: 21" or 23" (53 cm or 58 cm)  
Backrest length: 26" (65 cm)

## Bari 385 Bariatric Transport Commode/Shower Chair

*Because Broda understands the challenges of Bariatric care, we have addressed many of these challenges with the uniquely superior Bari 385*

### ✓ Weight Capacity

- **800 lb (363 kg) capacity** enables bariatric patients to leave their bed for shower and commode needs
- Heavy-duty frame and casters ensure **safety and durability**

### ✓ Safe Positioning and Patient Handling

- Infinitely adjustable tilt, recline and elevating legrest helps **reduce the risk of falls** and helps patients feel secure and comfortable
- Anterior tilt works as a stand-assist
- Lower back concavity **accommodates patient's Gluteal Shelf**

### ✓ Shower and Commode Functions

- Unique recline feature opens mid-section for ease of cleaning hard to reach abdominal areas
- Open front commode seat facilitates **peri cleaning**

### ✓ Easy Maneuverability

- 4 total lock swivel casters and 2 locking middle wheels allow chair to be easily pushed and permits **turning in tight corners without lateral drifting**
- Patient weight is concentrated primarily over middle wheels in upright chair position for safe and easy maneuvering

### Standard Features

- |   |  |   |
|---|--|---|
| - 800 lb (363 kg) weight capacity           | - Elevating and length adjustable legrest    | - Stainless steel frame with drainage holes     |
| - 14° posterior tilt                        | - Flip up footrest                           | - Removable, adjustable armrests                |
| - 8° anterior tilt                          | - Four 5" total lock stainless steel casters | - Urethane foam commode seat with front opening |
| - 65° back recline                          | - Two 8" stainless steel middle wheels       | - Commode pan and basket                        |
| - Comfort Tension Seating™                  | - Emergency middle wheel brake               |   |
| - 33" or 39" overall width (83 cm or 98 cm) |  |   |



14° Posterior tilt



8° Anterior tilt



65° Back recline

Width adjustable armrests accommodate widths up to 33"



Open front commode seat facilitates peri cleaning





*3 Chairs in One!*

Optional Transport Seat

*The Bari 385 is 3 chairs in one*

- Commode Chair
- Shower Chair
- Transport Chair – with the option of our easily interchangeable transport seat

Infinite positioning options and easy maneuverability make the Bari 385 excellent for patient transport within a facility.



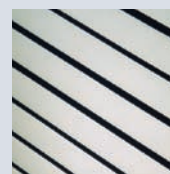
Removable arms assist with side transfers



Emergency hand brake easily locks 8" middle wheels

### Broda's Comfort Tension Seating™

- Conforms to patient for comfort and pressure reduction
- Anti-bacterial & anti-fungal
- Easy to clean



### Tested for Safety and Durability

Broda has conducted numerous tests in order to determine not only the weight capacity of the Bari 385, but also to ensure that the stability, static strength and life cycle durability of the chair are sufficient to provide optimum safety and functionality in even the most extreme cases.

### Bariatric Positioning

#### Broda Vanguard Bariatric

- The Vanguard offers outstanding comfort unlike any other bariatric chair
- 500 lb. weight capacity
- 30° of seat tilt and 10° anterior tilt operated by foot pump- for No Lift
- 45° of back recline assists with comfort and breathing
- 26", 28", 30" seat widths



Vanguard with IV pole and vinyl seat and back pad upgrade.

